



Certificate of Authorization No. LB7264
Prepared by: Jeff S. Hodapp, P.S.M.
951 Broken Sound Parkway, Suite 320
Boca Raton, Florida 33487
Tel: (561) 241-9988
Fax: (561) 241-5182

LEGEND:

- ⊙ SET P.R.M. (UNLESS OTHERWISE NOTED) - 4" X 4" CONC. MON. WITH ALUMINUM DISK STAMPED P.R.M. - LB7264
- P.C.P.
- CENTERLINE

ABBREVIATIONS:

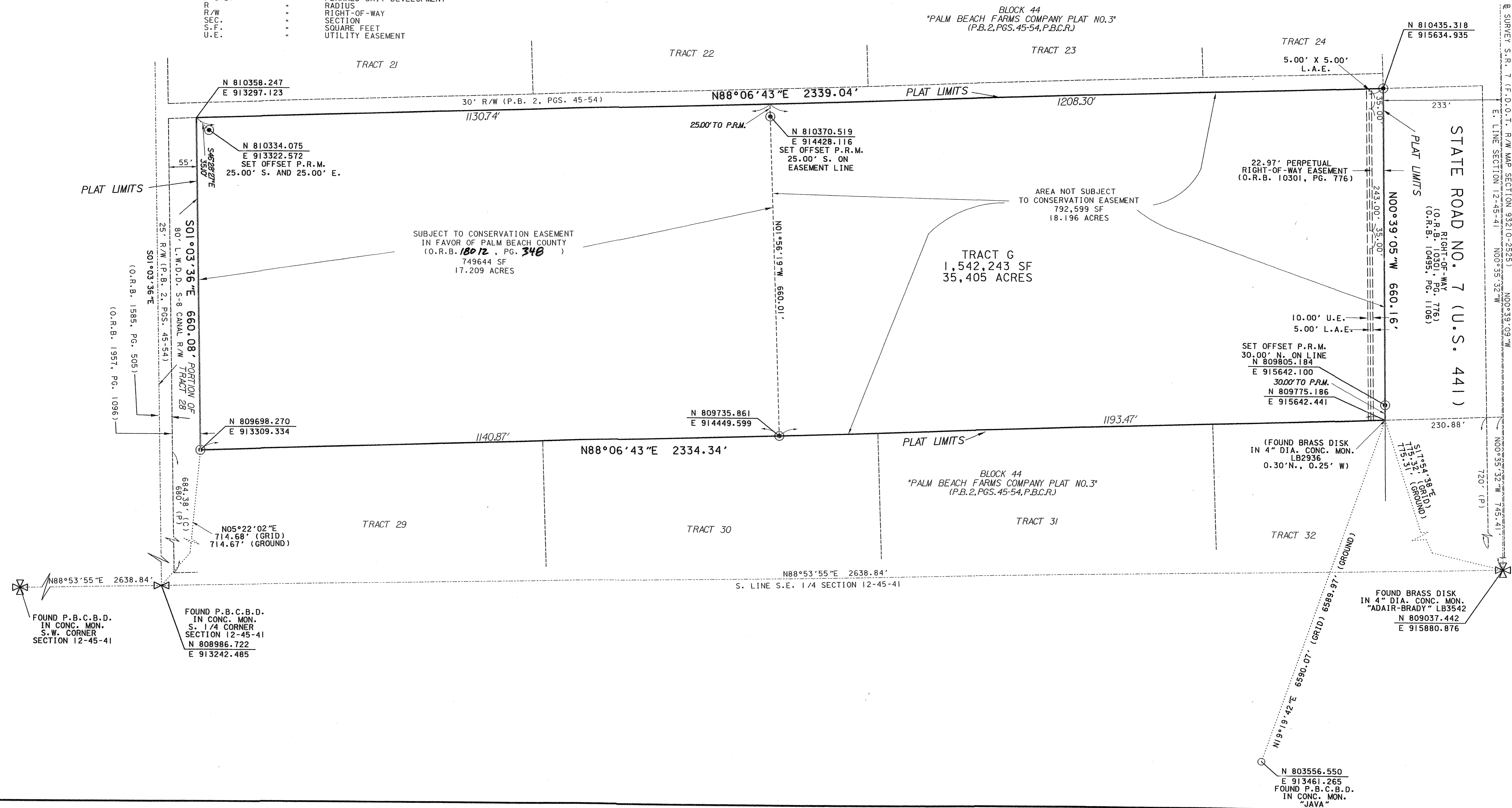
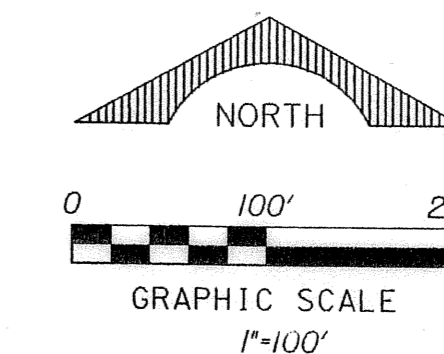
- CONC. CONCRETE
- COR. CORNER
- D. DELTA (CENTRAL ANGLE)
- D.E. DRAINAGE EASEMENT
- L. LENGTH
- L.A.E. LIMITED ACCESS EASEMENT
- L.B. LICENSED BUSINESS
- L.E. LANDSCAPE EASEMENT
- L.S. LICENSED SURVEYOR
- L.W.D.D. LAKE WORTH DRAINAGE DISTRICT
- MON. MONUMENT
- O.R.B. OFFICIAL RECORDS BOOK
- N.R. NON-RADIAL
- P.B. PLAT BOOK
- P.B.C.R. PALM BEACH COUNTY RECORDS
- PG. PAGE
- P.C.P. PERMANENT CONTROL POINT
- P.O.B. POINT OF BEGINNING
- P.O.C. POINT OF COMMENCEMENT
- P.R.M. PERMANENT REFERENCE MONUMENT
- P.S.M. PROFESSIONAL SURVEYOR & MAPPER
- P.U.D. PLANNED UNIT DEVELOPMENT
- R. RADIUS
- R/W RIGHT-OF-WAY
- SEC. SECTION
- S.F. SQUARE FEET
- U.E. UTILITY EASEMENT

LIPTON PLAT

PETITION NO. 2003-035 (COUNTRYSIDE MEADOWS AGR-PDD)
A REPLAT OF ALL OF TRACTS 26 AND 27, TOGETHER WITH PORTIONS OF TRACTS 25 AND 28, ALL OF BLOCK 44, "PALM BEACH FARMS COMPANY PLAT NO. 3" (P.B. 2, PGS. 45-54, P.B.C.R.), IN SECTION 12, TOWNSHIP 45 SOUTH, RANGE 41 EAST, PALM BEACH COUNTY, FLORIDA.
OCTOBER, 2004

53

SHEET 2 OF 2



SUBDIVISION LIPTON PLAT
 BOOK 104 PAGE 53
 FLOOD ZONE B
 QUAD # 04
 ZONING A12
 SE
 TAZ 712
 FUD NAME

FOUND P.B.C.B.D. IN CONC. MON. S.W. CORNER SECTION 12-45-41 N 808986.722 E 913242.485

FOUND P.B.C.B.D. IN CONC. MON. S. 1/4 CORNER SECTION 12-45-41 N 80937.442 E 915880.876

N 803556.550 E 913461.265
FOUND P.B.C.B.D. IN CONC. MON. "JAVA"